





60x120

R9

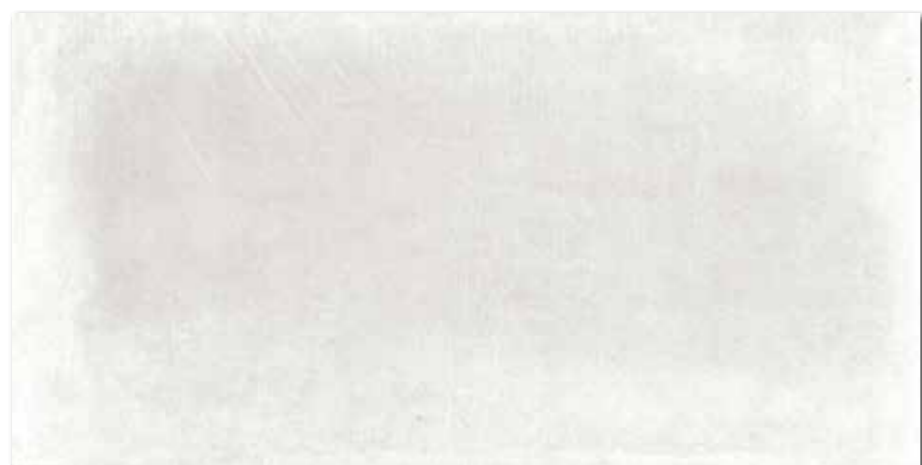
A

V3

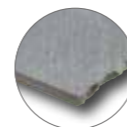
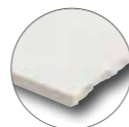
R



DAKV1743
PEI 5 \odot 93 | m²
mat | matt
běžová | beige



DAKV1740
PEI 5 \odot 93 | m²
mat | matt
bílošedá | white-grey



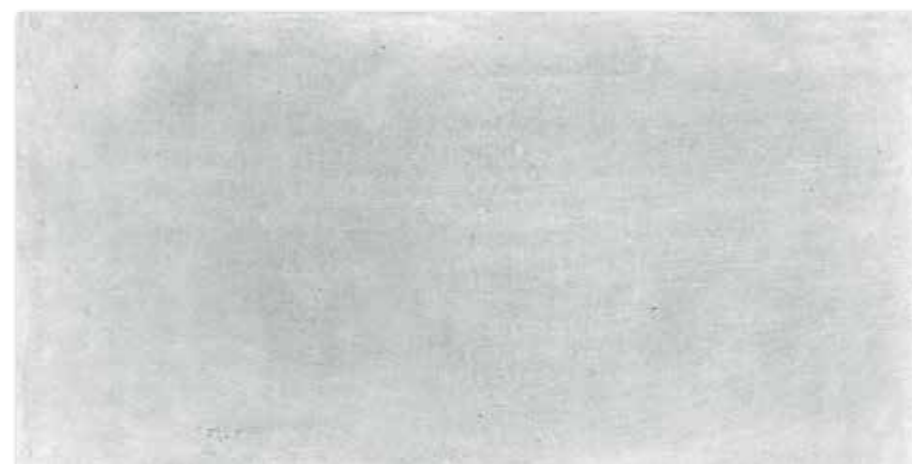
60x120

R9

A

V3

R



DAKV1741
PEI 5 \odot 93 | m²
mat | matt
šedá | grey



DAKV1742
PEI 4 \odot 93 | m²
mat | matt
tmavě šedá | dark grey



60x120



598x1198x10



EN 14411 - G B Ia



2



1,4



1,44



27



38,88



32,7



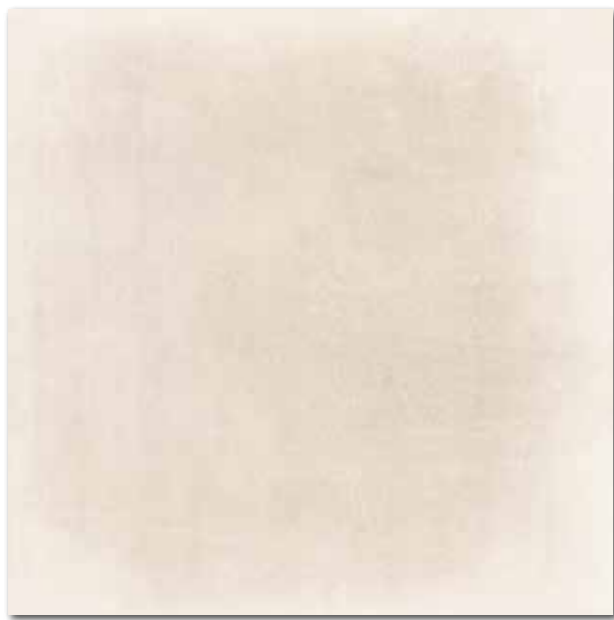
22,7



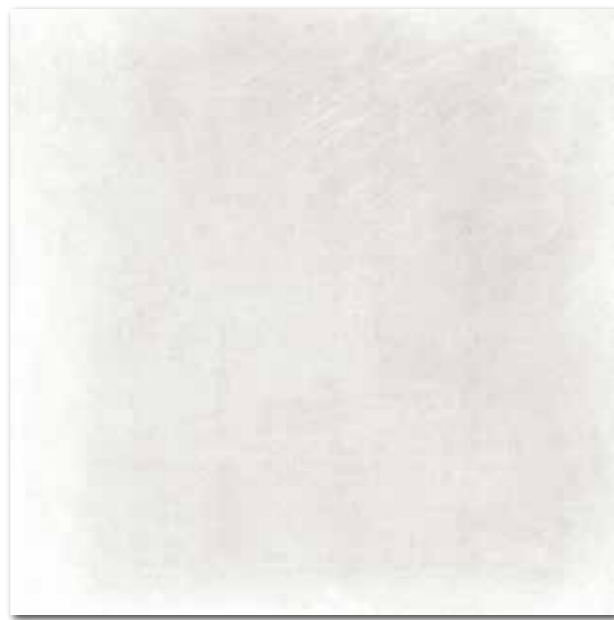
908



80x80
R9
A
V3
R



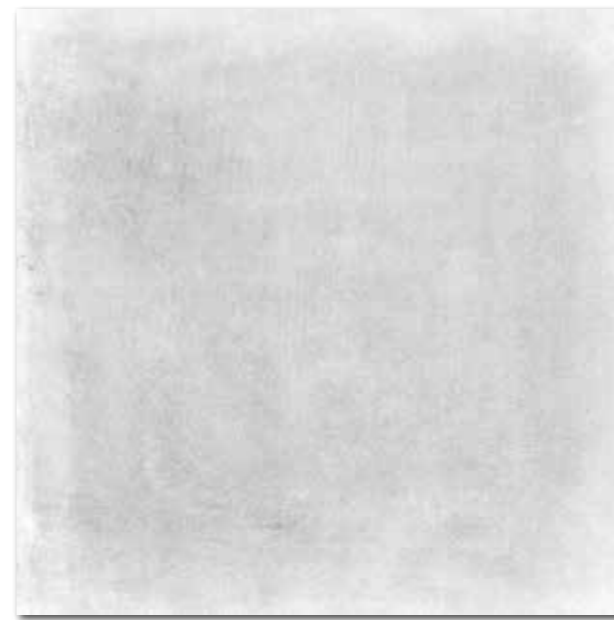
DAK81743
PEI 5 ○ 89 | m²
mat | matt



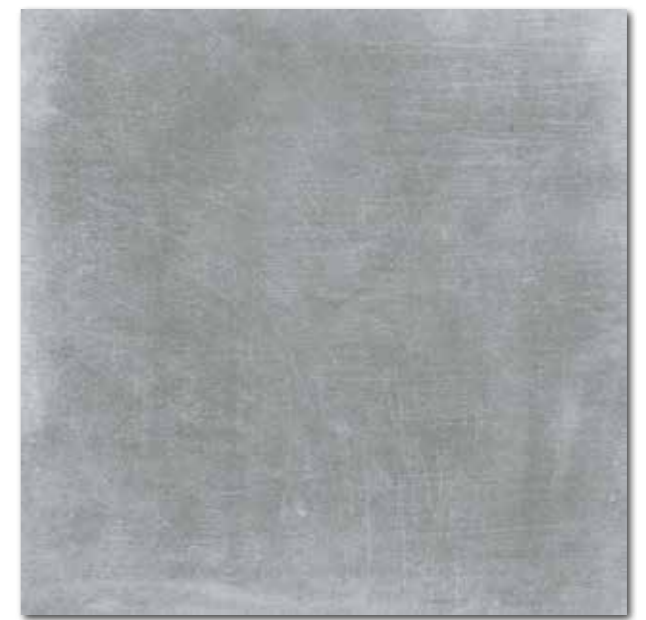
DAK81740
PEI 5 ○ 89 | m²
mat | matt



80x80
R9
A
V3
R



DAK81741
PEI 5 ○ 89 | m²
mat | matt



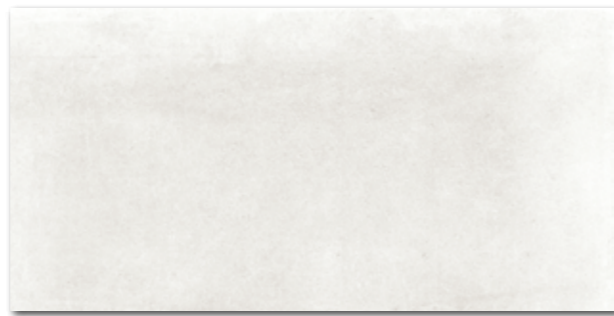
DAK81742
PEI 4 ○ 89 | m²
mat | matt

40x80

R9
A
V3
R



DAK84743
PEI 5 ○ 89 | m²
mat | matt
běžová | beige



DAK84740
PEI 5 ○ 89 | m²
mat | matt
bílošedá | white-grey

40x80

R9
A
V3
R



DAK84741
PEI 5 ○ 89 | m²
mat | matt
šedá | grey



DAK84742
PEI 4 ○ 89 | m²
mat | matt
tmavě šedá | dark grey

výrobek | product



80-80	798-798-10	EN 14411 - G Bla	2	1,6	1,28	42	53,76	28,0	21,9	1 202
dlaždice floor tile	40-80	398-798-10	4	3,1	1,28	42	53,76	28,0	21,9	1 202

Doporučené skladby formátů viz str. 450. | Recommended combinations of modular sizes see page 450.



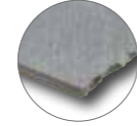
60x60
R9
A
V3
R



DAK63743
PEI 5 ○ 82 | m²
mat | matt



DAK63740
PEI 5 ○ 82 | m²
mat | matt



DAK63741
PEI 5 ○ 82 | m²
mat | matt

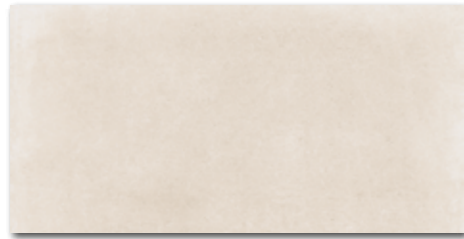


DAK63742
PEI 4 ○ 82 | m²
mat | matt

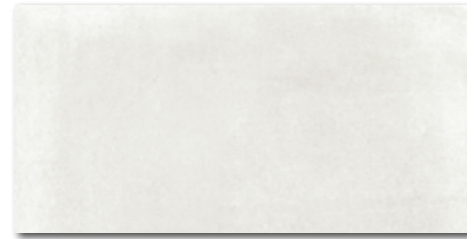


60x60
R9
A
V3
R

30x60
R9
A
V3
R



DAKSE743
PEI 5 ○ 78 | m²
mat | matt



DAKSE740
PEI 5 ○ 78 | m²
mat | matt



DAKSE741
PEI 5 ○ 78 | m²
mat | matt



DAKSE742
PEI 4 ○ 78 | m²
mat | matt

30x60
R9
A
V3
R

45x45
R9
A
V3



DAA4H743
PEI 5 ○ 74 | m²
mat | matt

běžová | beige



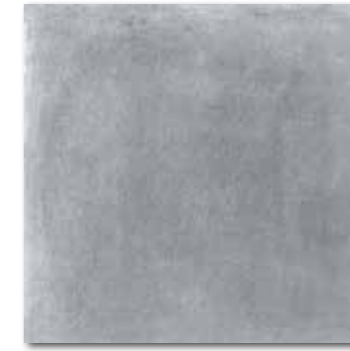
DAA4H740
PEI 5 ○ 74 | m²
mat | matt

bílošedá | white-grey



DAA4H741
PEI 5 ○ 74 | m²
mat | matt

šedá | grey



DAA4H742
PEI 4 ○ 74 | m²
mat | matt

tmavě šedá | dark grey

45x45
R9
A
V3

výrobek | product



EN



ks/m²



m²



m²



kg

kg/m²

brutto kg

výrobek product	60x60	30x60	45x45	598x598x10	298x598x10	448x448x8	EN 14411 - G Bla	3	2,8	1,08	32	34,56	23,7	21,9	782
dlaždice floor tile	60x60	30x60	45x45	598x598x10	298x598x10	448x448x8	EN 14411 - G Bla	3	2,8	1,08	32	34,56	23,7	21,9	782
dlaždice floor tile	60x60	30x60	45x45	598x598x10	298x598x10	448x448x8	EN 14411 - G Bla	6	5,6	2,16	64	69,12	47,4	43,8	1564
dlaždice floor tile	60x60	30x60	45x45	598x598x10	298x598x10	448x448x8	EN 14411 - G Bla	6	5	1,21	34	41,14	21,1	17,4	741

Doporučené skladby formátů viz str. 450. | Recommended combinations of modular sizes see page 450.



DDM06743 (SET)
PEI 5 \odot 72 | set
mat | matt | R10 | B | > | > | >

běžová | beige



DAK12743 (SET)
PEI 5 \odot 94 | m²
mat | matt | R10 | B | > | > | >



DAK26743
PEI 5 \odot 90 | m²
mat | matt | R9 | A | > | >



DDT26743*
 \odot 48 | ks
mat | matt | >

5x5 | 30x30
10x10
20x20
v3
R



DDM06740 (SET)
PEI 5 \odot 72 | set
mat | matt | R10 | B | > | > | >

bílošedá | white-grey



DAK12740 (SET)
PEI 5 \odot 94 | m²
mat | matt | R10 | B | > | > | >



DAK26740
PEI 5 \odot 90 | m²
mat | matt | R9 | A | > | >



DDT26740*
 \odot 48 | ks
mat | matt | >

5x5 | 30x30
10x10
20x20
v3
R



DDM06741 (SET)
PEI 5 \odot 72 | set
mat | matt | R10 | B | > | > | >

šedá | grey



DAK12741 (SET)
PEI 5 \odot 94 | m²
mat | matt | R10 | B | > | > | >

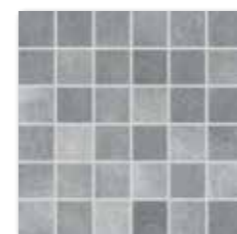


DAK26741
PEI 5 \odot 90 | m²
mat | matt | R9 | A | > | >



DDT26741*
 \odot 48 | ks
mat | matt | >

5x5 | 30x30
10x10
20x20
v3
R



DDM06742 (SET)
PEI 4 \odot 72 | set
mat | matt | R10 | B | > | > | >

tmavě šedá | dark grey



DAK12742 (SET)
PEI 4 \odot 94 | m²
mat | matt | R10 | B | > | > | >



DAK26742
PEI 4 \odot 90 | m²
mat | matt | R9 | A | > | >

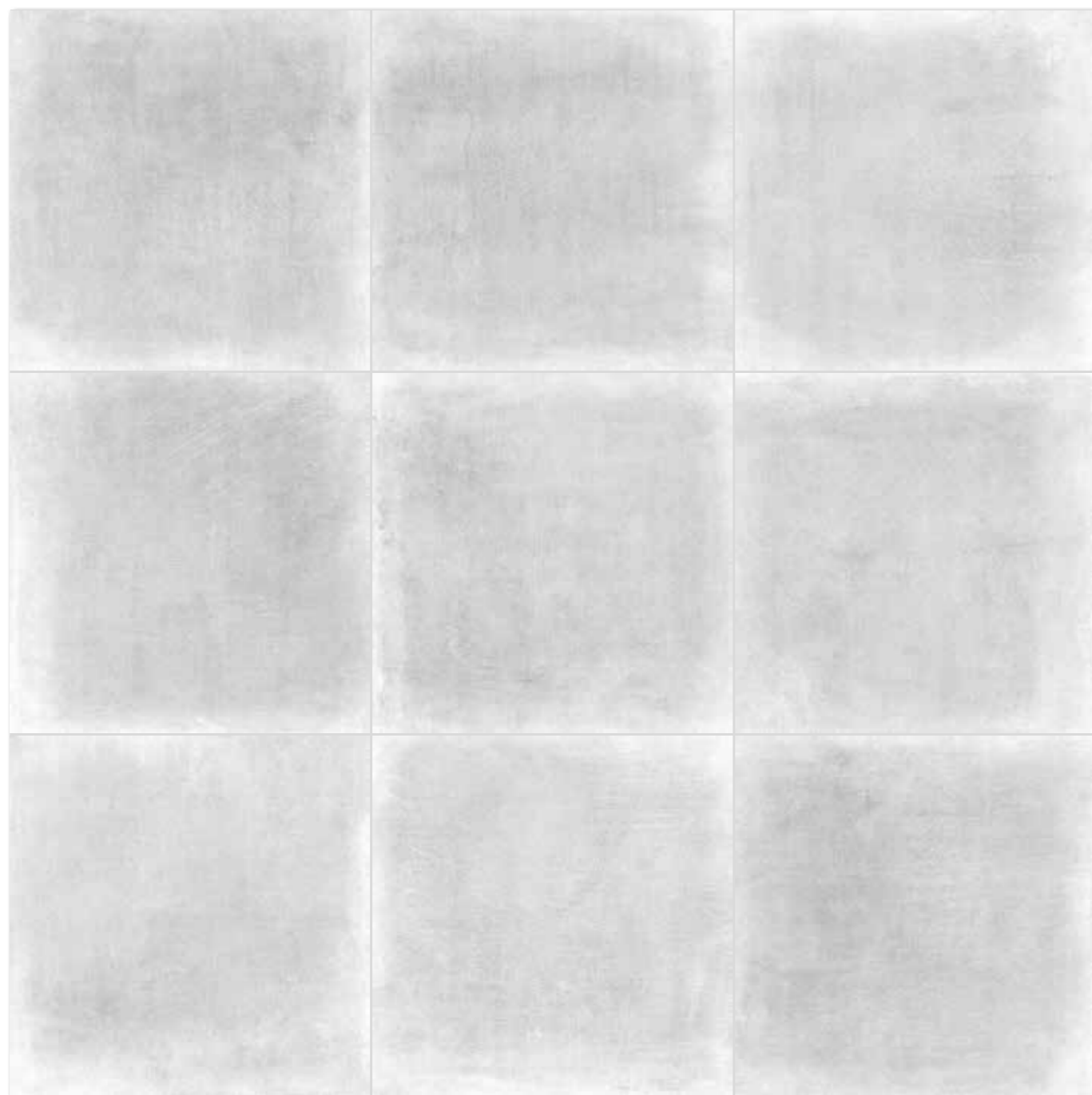


DDT26742*
 \odot 48 | ks
mat | matt | >

5x5 | 30x30
10x10
20x20
v3
R

výrobek product	cm	mm	EN	ks/m ²	m ²	m ²	kg	kg/m ²	brutto kg
mozaika set 30x30 cm mosaic sheet 30x30 cm	5x5	48x48x10	EN 14411 - G Bla	3	11	0,27	-	5,9	21,9
diaždice floor tile	10x10	98x98x10	EN 14411 - G Bla	10	11	0,91	56	50,96	19,9
diaždice floor tile	20x20	198x198x10	EN 14411 - G Bla	23	25	0,92	57	52,44	20,1
dekor decor	20x20	198x198x10	EN 14411 - G Bla	3	25	0,12	-	2,6	21,9

*Balení výrobku obsahuje nahodilý mix zobrazených designů. | The products are deliberately mixed in packing to include a random selection of designs.

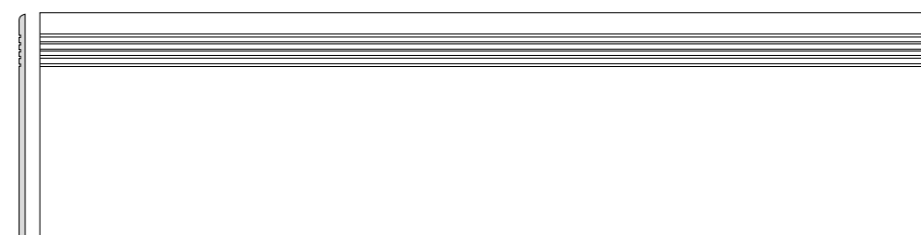


Všechny výrobky celé série vykazují velké odchylky odstínové difference V3. | All products of the entire batch show big deviations in shade difference V3.

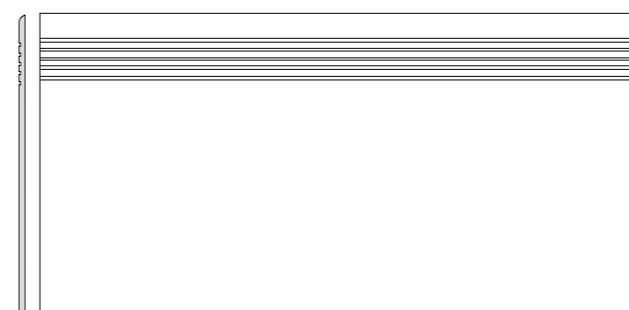
Před pokládkou doporučujeme jednotlivé obkladové prvky vybírat z několika kartonů a výslednou plochu komponovat podle inspirativní fotodokumentace z katalogů RAKO případně z webových stránek www.rako.cz. Žadoucí je kombinace všech jednotlivých designů obkladových prvků včetně jejich natáčení o 90° nebo 180° tak, aby bylo dosaženo vyváženého vzhledu obkládané plochy.

Before laying the tiles, we suggest you select from several cartons and arrange them as illustrated in the inspiration photo documentation in RAKO catalogues or website www.rako.eu, and mix the tiles to achieve the required result including turning them by 90° or 180°.

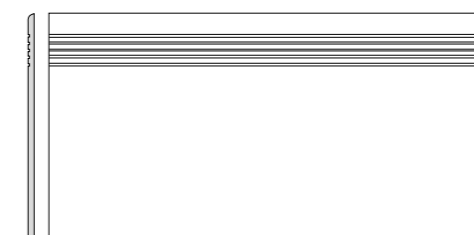
výrobek product	cm	mm	EN	ks/m ²	kg/m ²	brutto kg
schodovka step tile	30x120	298x1198x10	STO č. 030 - 059824	5	2,8	1,80
schodovka step tile	40x80	398x798x10	STO č. 030 - 059824	2	3,1	0,64
schodovka step tile	30x60	298x598x10	STO č. 030 - 059824	6	5,6	1,08
sokl skirting plinth	80x9,5	798x95x10	STO č. 030 - 059824	10	13,2	0,76
sokl skirting plinth	60x9,5	598x95x10	STO č. 030 - 059824	13	17,5	0,74
sokl skirting plinth	45x8,5	448x85x8	STO č. 030 - 059824	25	26,1	0,96
schodová tvarovka special step tile	40x80	398x798x10	STO č. 030 - 059824	2	-	-



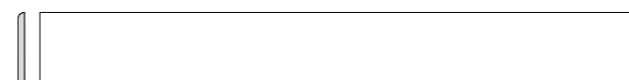
DCPVF740* bílošedá | white-grey
 DCPVF741* šedá | grey
 DCPVF742* tmavě šedá | dark grey
 DCPVF743* béžová | beige
 PEI 4-5 ○ 86 | ks
 mat | matt



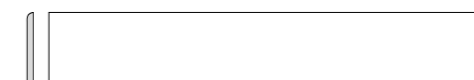
DCP84740 bílošedá | white-grey
 DCP84741 šedá | grey
 DCP84742 tmavě šedá | dark grey
 DCP84743 béžová | beige
 PEI 4-5 ○ 78 | ks
 mat | matt



DCPSE740 bílošedá | white-grey
 DCPSE741 šedá | grey
 DCPSE742 tmavě šedá | dark grey
 DCPSE743 béžová | beige
 PEI 4-5 ○ 72 | ks
 mat | matt



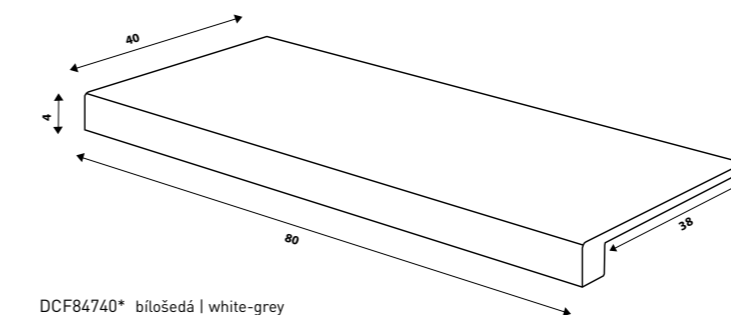
DSA89740 bílošedá | white-grey
 DSA89741 šedá | grey
 DSA89742 tmavě šedá | dark grey
 DSA89743 béžová | beige
 ○ 72 | ks
 mat | matt



DSAS4740 bílošedá | white-grey
 DSAS4741 šedá | grey
 DSAS4742 tmavě šedá | dark grey
 DSAS4743 béžová | beige
 ○ 58 | ks
 mat | matt



DSAPS740 bílošedá | white-grey
 DSAPS741 šedá | grey
 DSAPS742 tmavě šedá | dark grey
 DSAPS743 béžová | beige
 ○ 56 | ks
 mat | matt



DCF84740* bílošedá | white-grey
 DCF84741* šedá | grey
 DCF84742* tmavě šedá | dark grey
 DCF84743* béžová | beige
 PEI 4-5 ○ 108 | ks
 mat | matt

* Výroba na objednávku. | Production by order.

