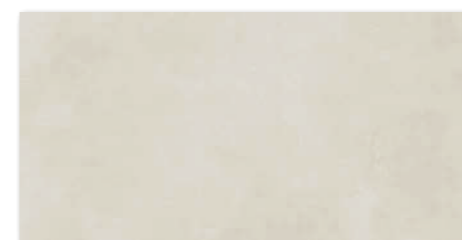




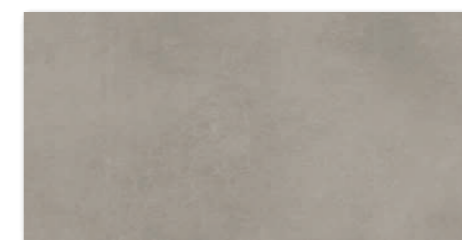


30x60



WADV820
 ○ 75 | m²
 reliéf mat | structure matt | **V3**

WARV820
 ○ 78 | m²
 reliéf mat | structure matt | **V3**



WADV821
 ○ 75 | m²
 reliéf mat | structure matt | **V3**

WARV821
 ○ 78 | m²
 reliéf mat | structure matt | **V3**



WADV826
 ○ 83 | m²
 reliéf mat | lesk | structure matt | glossy | **V4**



WARV833
 ○ 86 | m²
 reliéf mat | lesk | structure matt | glossy | **V4**



WARV831
 ○ 86 | m²
 reliéf mat | lesk | structure matt | glossy | **V4**

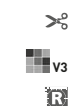


WDM05820 (SET)
 ○ 66 | set
 reliéf mat | structure matt
 slonová kost | ivory



WDM05821 (SET)
 ○ 66 | set
 reliéf mat | structure matt
 hnědošedá | brown-grey

5x5 | 30x30



výrobek | product



obkládačka | wall tile 30x60 298-598-8 EN 14411 - L BIII 8 5,56 1,44 40 57,60 21,3 14,8 876
 mozaika set 30x30 cm | mosaic sheet 30x30 cm 5x5 48x48x8 STO č. 030 - 059826 4 11 0,36 - - 5,2 14,8 -

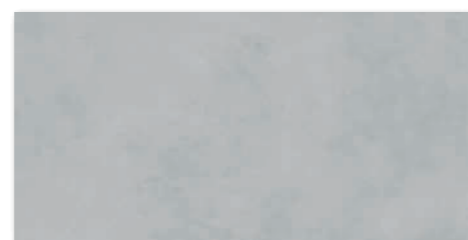
ⓘ Balení výrobku obsahuje nahoditý mix designů. | The products are deliberately mixed in packing to include a random selection of designs.



30×60



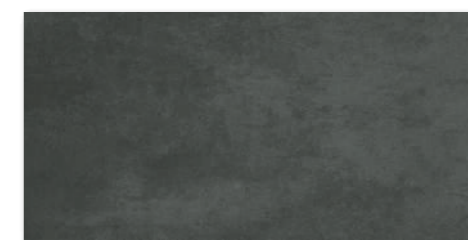
WADV822 WARV822
 ○ 75 | m² ○ 78 | m²
 reliéf mat | structure matt | **v3** reliéf mat | structure matt | **v3** | **EN**



WADV823 WARV823
 ○ 75 | m² ○ 78 | m²
 reliéf mat | structure matt | **v3** reliéf mat | structure matt | **v3** | **EN**



WADV824 WARV824
 ○ 75 | m² ○ 78 | m²
 reliéf mat | structure matt | **v3** reliéf mat | structure matt | **v3** | **EN**



WADV825 WARV825
 ○ 75 | m² ○ 78 | m²
 reliéf mat | structure matt | **v3** reliéf mat | structure matt | **v3** | **EN**



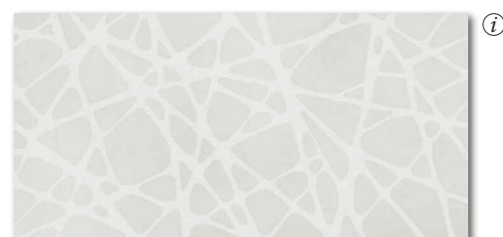
WADV827
 ○ 83 | m²
 reliéf matlesk | structure mattglossy | **v4** **DryFix**



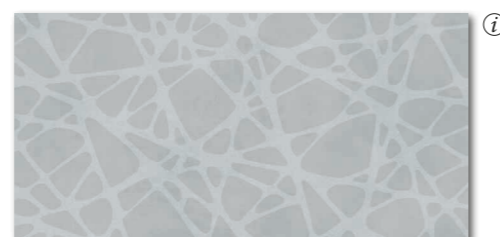
WADV828
 ○ 83 | m²
 reliéf matlesk | structure mattglossy | **v4** **DryFix**



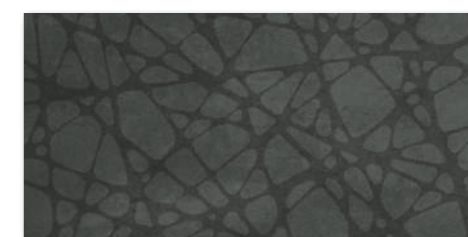
WADV829
 ○ 83 | m²
 reliéf matlesk | structure mattglossy | **v4** **DryFix**



WARV834
 ○ 86 | m²
 reliéf matlesk | structure mattglossy | **v4** | **EN** **DryFix**



WARV835
 ○ 86 | m²
 reliéf matlesk | structure mattglossy | **v4** | **EN** **DryFix**

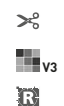


WARV836
 ○ 86 | m²
 reliéf matlesk | structure mattglossy | **v4** | **EN** **DryFix**

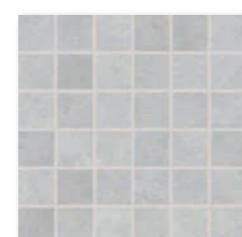


WARV832
 ○ 86 | m²
 reliéf matlesk | structure mattglossy | **v4** | **EN** **DryFix**

5×5 | 30×30



WDM05822 (SET)
 ○ 66 | set
 reliéf mat | structure matt
 bílá | white



WDM05823 (SET)
 ○ 66 | set
 reliéf mat | structure matt
 světle šedá | light grey



WDM05824 (SET)
 ○ 66 | set
 reliéf mat | structure matt
 tmavě šedá | dark grey



WDM05825 (SET)
 ○ 66 | set
 reliéf mat | structure matt
 černá | black

5×5 | 30×30



výrobek | product



brutto kg

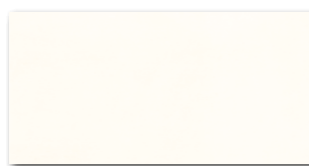
obkládačka | wall tile 30×60 298-598-8 EN 14411 - L BIII
 mozaika set 30×30 cm | mosaic sheet 30×30 cm 5×5 48×48×8 STO č. 030 - 059826

8	5,56	1,44	40	57,60	21,3	14,8	876
4	11	0,36	-	-	5,2	14,8	-

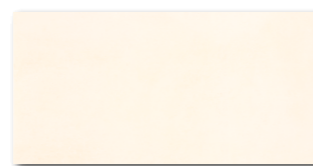
i Balení výrobku obsahuje nahoditý mix designů. | The products are deliberately mixed in packing to include a random selection of designs.



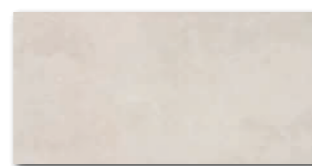
20x40



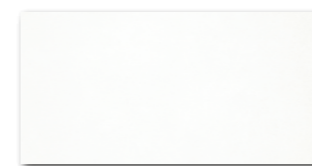
WADMB719
 ○ 68 l m²
 mat | matt | **V2**
 bíloběžová | white-beige



WADMB720
 ○ 68 l m²
 mat | matt | **V2**

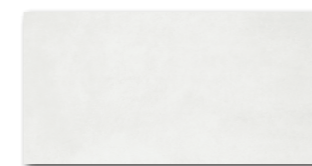


WADMB721
 ○ 68 l m²
 mat | matt | **V2**

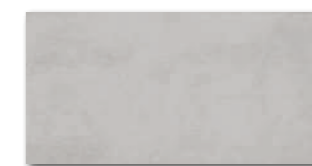


WADMB722
 ○ 68 l m²
 mat | matt | **V2**

bílošedá | white-grey



WADMB723
 ○ 68 l m²
 mat | matt | **V2**



WADMB724
 ○ 68 l m²
 mat | matt | **V2**



20x40

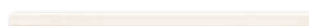


WADM220
 ○ 76 l m²
 mat | matt | **V4**
 slonová kost | ivory



WADM223
 ○ 76 l m²
 mat | matt | **V4**
 světle šedá | light grey

40x2



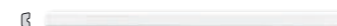
WLRMG719
 ○ 52 l ks
 reliéf mat | structure matt



WLRMG720
 ○ 52 l ks
 reliéf mat | structure matt



WLRMG721
 ○ 52 l ks
 reliéf mat | structure matt



WLRMG722
 ○ 52 l ks
 reliéf mat | structure matt



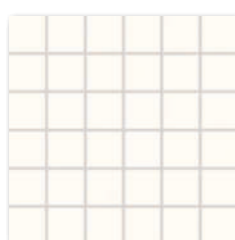
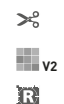
WLRMG723
 ○ 52 l ks
 reliéf mat | structure matt



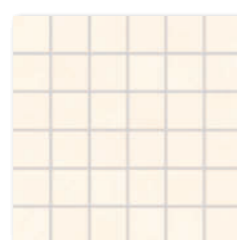
WLRMG724
 ○ 52 l ks
 reliéf mat | structure matt

40x2

5x5 | 30x30



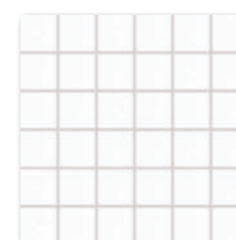
WDM05719 (SET)
 ○ 66 l set
 mat | matt
 bíloběžová | white-beige



WDM05720 (SET)
 ○ 66 l set
 mat | matt
 slonová kost | ivory



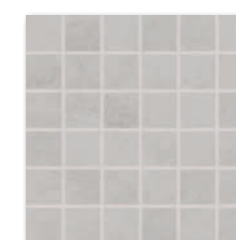
WDM05721 (SET)
 ○ 66 l set
 mat | matt
 hnědošedá | brown-grey



WDM05722 (SET)
 ○ 66 l set
 mat | matt
 bílošedá | white-grey



WDM05723 (SET)
 ○ 66 l set
 mat | matt
 světle šedá | light grey



WDM05724 (SET)
 ○ 66 l set
 mat | matt
 tmavě šedá | dark grey

5x5 | 30x30

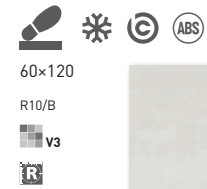


výrobek | product



obkládačka wall tile	20x40	198-398x7	EN 14411 - L BIII	20	12,5	1,60	48	76,80	20,6	12,9	1 016
reliéfní listela relief listel	40x2	398x20	STO č. 030 - 060753	12	125	0,09	-	-	1,7	18,9	-
mozaika set 30x30 cm mosaic sheet 30x30 cm	5x5	48x48x7	STO č. 030 - 059826	3/4	11	0,27/0,36	-	-	3,5/4,8	12,9	-

! Balení výrobku obsahuje nahodilý mix designů. | The products are deliberately mixed in packing to include a random selection of designs.



DARV1722*
DARV9722**
 PEI 5 ○ 87 | m²
 reliéf mat | structure matt
 bílá | white



DARV1720*
DARV9720**
 PEI 5 ○ 87 | m²
 reliéf mat | structure matt
 slonová kost | ivory

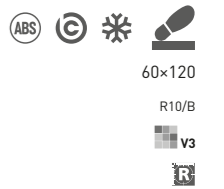


DARV1721*
DARV9721**
 PEI 4 ○ 87 | m²
 reliéf mat | structure matt
 hnědošedá | brown-grey

výrobek | product



dlaždice floor tile*	60×120	598×1198×10	EN 14411 - G Bla	2	1,4	1,44	27	38,88	32,7	22,7	908
dlaždice floor tile**	60×120	598×1198×9	EN 14411 - G Bla	2	1,4	1,44	30	43,20	29,3	20,4	905



DARV1723*
DARV9723**
 PEI 4 ○ 87 | m²
 reliéf mat | structure matt
 světle šedá | light grey



DARV1724*
DARV9724**
 PEI 4 ○ 87 | m²
 reliéf mat | structure matt
 tmavě šedá | dark grey



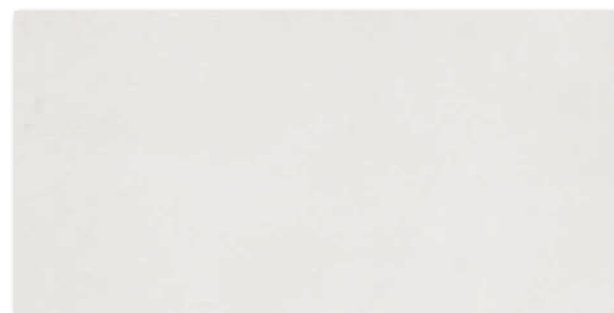
DARV1725*
DARV9725**
 PEI 4 ○ 87 | m²
 reliéf mat | structure matt
 černá | black

* Do vyprodání zásob | Available white stocks last

** Nový produkt o tloušťce 9 mm k dispozici během roku 2025 | New product in 9 mm thickness available during 2025.



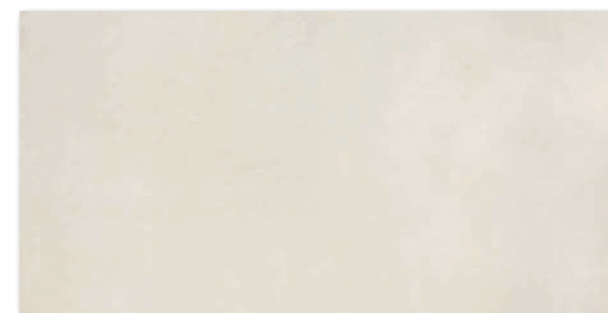
DAR81722
PEI 5 ○ 83 | m²
relief mat | structure matt



DAR84722
PEI 5 ○ 83 | m²
relief mat | structure matt
bílá | white



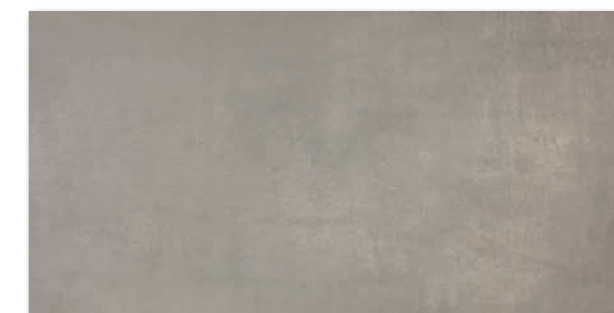
DAR81720
PEI 5 ○ 83 | m²
relief mat | structure matt



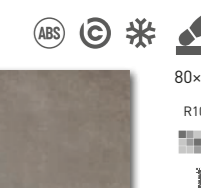
DAR84720
PEI 5 ○ 83 | m²
relief mat | structure matt
slonová kost | ivory



DAR81721
PEI 4 ○ 83 | m²
relief mat | structure matt



DAR84721
PEI 4 ○ 83 | m²
relief mat | structure matt
hnědošedá | brown-grey



80x80
R10/B
v3
R

40x80
R10/B
v3
R

výrobek | product



80-80



798-798-10



EN 14411 - G Bla



2



1,6



1,28



42



53,76



28,0



21,9



1 202

dlaždice | floor tile
dlaždice | floor tile

40-80

398-798-10

EN 14411 - G Bla

4

3,1

1,28

42

53,76

28,0

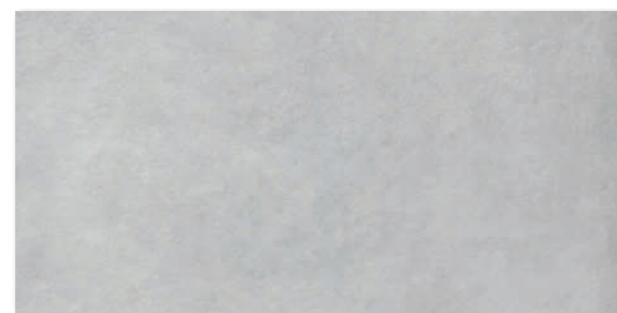
21,9

1 202

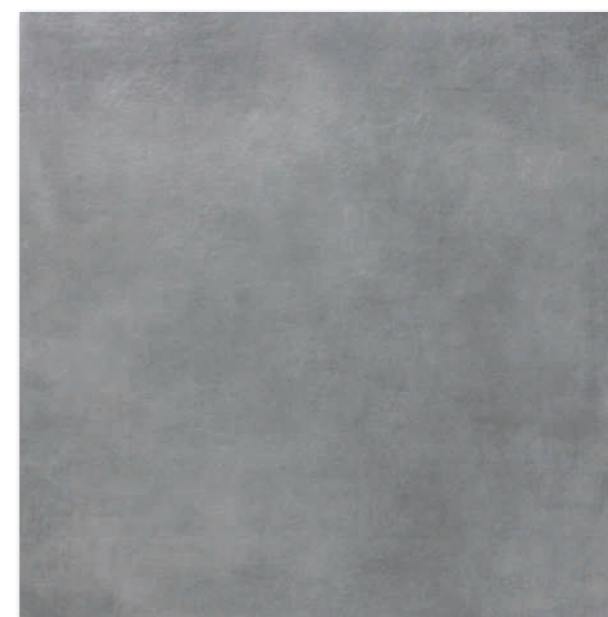
Doporučené skladby formátů viz str. 530-531. | Recommended combinations of modular sizes see pages 530-531.



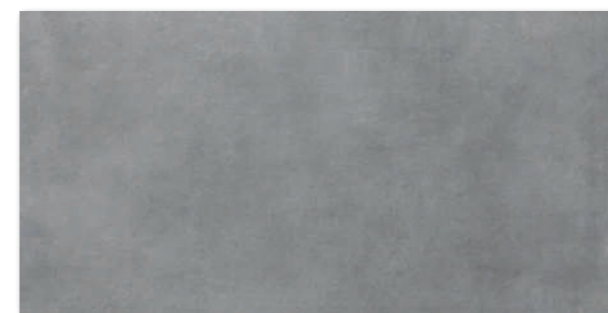
DAR81723
PEI 4 \odot 83 | m²
reliéf mat | structure matt



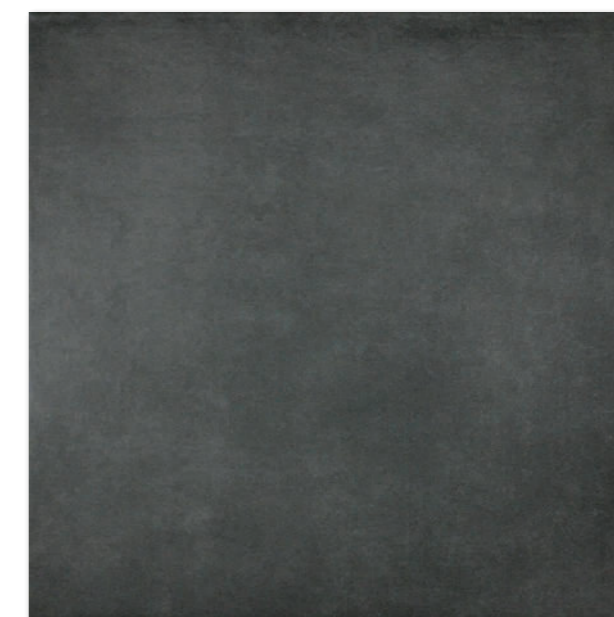
DAR84723
PEI 4 \odot 83 | m²
reliéf mat | structure matt
světle šedá | light grey



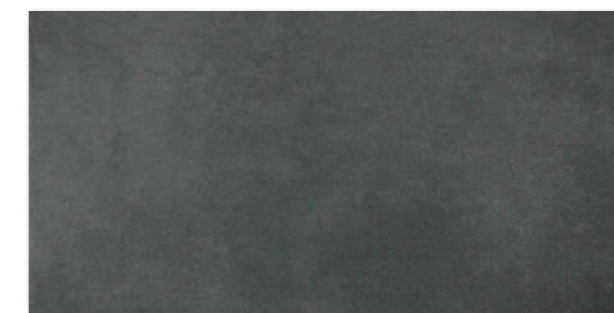
DAR81724
PEI 4 \odot 83 | m²
reliéf mat | structure matt



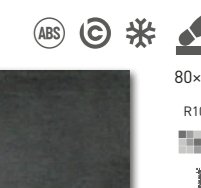
DAR84724
PEI 4 \odot 83 | m²
reliéf mat | structure matt
tmavě šedá | dark grey



DAR81725
PEI 4 \odot 83 | m²
reliéf mat | structure matt



DAR84725
PEI 4 \odot 83 | m²
reliéf mat | structure matt
černá | black



80x80
R10/B
v3
R

40x80
R10/B
v3
R

výrobek | product



80-80



798-798-10



EN 14411 - G Bla



2



1,6



1,28



42



53,76



28,0



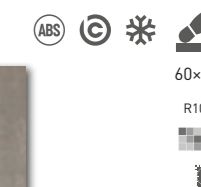
21,9



1 202

dlaždice | floor tile
dlaždice | floor tile

Doporučené skladby formátů viz str. 530-531. | Recommended combinations of modular sizes see pages 530-531.



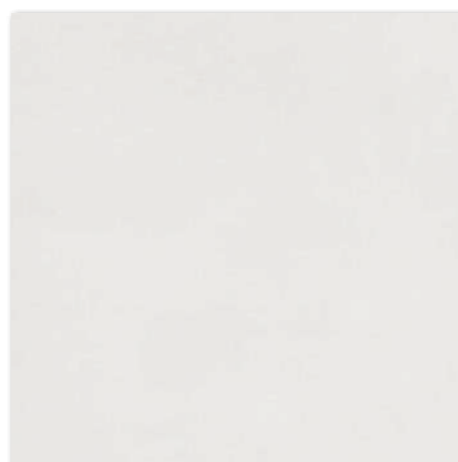
60x60
R10/B
v3
R

30x60
R10/B
v3
R

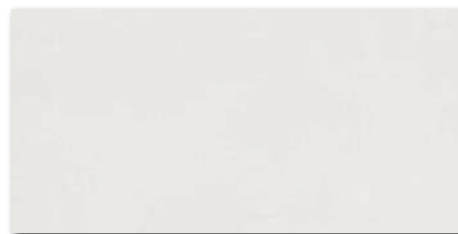
45x45
R10/B
v3
R

RAKO Home

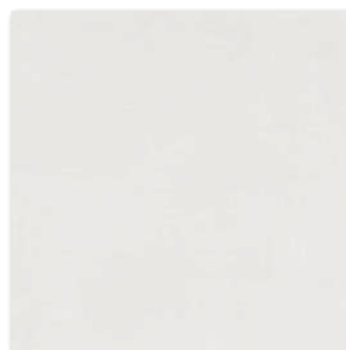
30x45
R10/B
v3
R



DAR63722*
DAR62722**
PEI 5 ○ 82 | m²
relief mat | structure matt



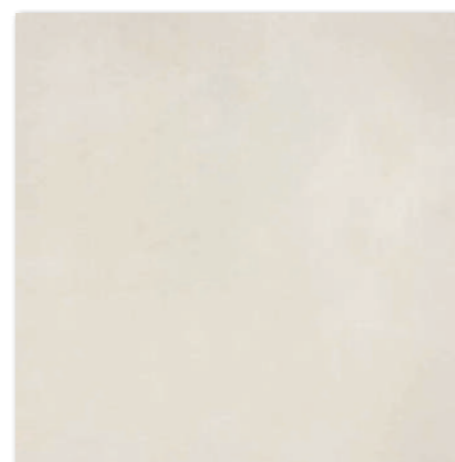
DARSE722*
DARSR722**
PEI 5 ○ 82 | m²
relief mat | structure matt



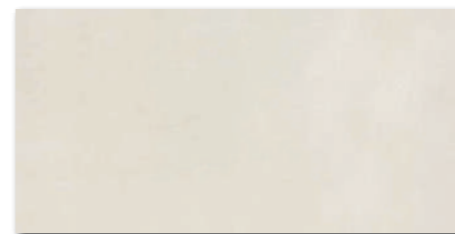
DAR4H722
PEI 5 ○ 76 | m²
relief mat | structure matt



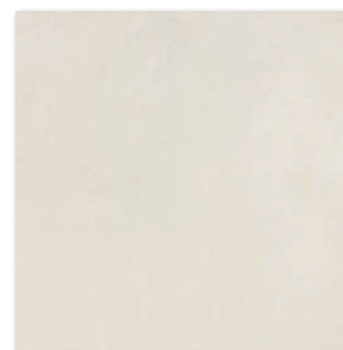
DDVP4722 (SET)
PEI 5 ○ 84 | set
relief mat | structure matt
bílá | white



DAR63720*
DAR62720**
PEI 5 ○ 82 | m²
relief mat | structure matt



DARSE720*
DARSR720**
PEI 5 ○ 82 | m²
relief mat | structure matt



DAR4H720
PEI 5 ○ 76 | m²
relief mat | structure matt



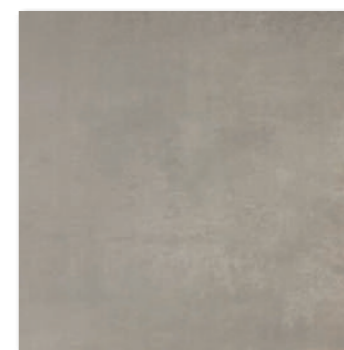
DDVP4720 (SET)
PEI 5 ○ 84 | set
relief mat | structure matt
slonová kost | ivory



DAR63721*
DAR62721**
PEI 4 ○ 82 | m²
relief mat | structure matt



DARSE721*
DARSR721**
PEI 4 ○ 82 | m²
relief mat | structure matt



DAR4H721
PEI 4 ○ 76 | m²
relief mat | structure matt



DDVP4721 (SET)
PEI 4 ○ 84 | set
relief mat | structure matt
hnědošedá | brown-grey

výrobek | product



výrobek product	cm	mm	EN	mm	ks/m ²	mm	kg	kg	kg	kg	kg	kg
dlaždice floor tile*	60x60	598x598x10	EN 14411 - G Bla	3	2,8	1,08	32	34,56	23,7	21,9	782	
dlaždice floor tile**	60x60	598x598x9	EN 14411 - G Bla	4	2,8	1,44	32	46,08	29,1	20,2	955	
dlaždice floor tile*	30x60	298x598x10	EN 14411 - G Bla	6	5,6	1,08	40	43,20	23,7	21,9	971	
dlaždice floor tile**	30x60	298x598x9	EN 14411 - G Bla	7	5,6	1,26	40	50,40	24,2	19,2	993	
dlaždice floor tile	45x45	445x445x8	EN 14411 - G Bla	6	5	1,21	34	41,14	21,1	17,4	741	
dlaždice floor tile	30x45	298x445x8	EN 14411 - G Bla	5	7,4	0,68	36	-	10,5	17,4	-	

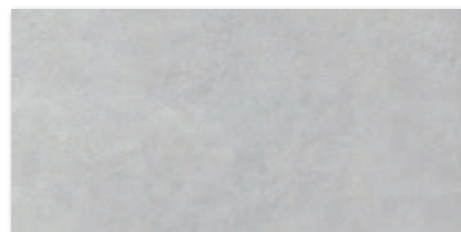
* Do vyprodání zásob | Available while stocks last

** Nový produkt o tloušťce 9 mm k dispozici během roku 2025 | New product in 9 mm thickness available during 2025.

Doporučené skladby formátů viz str. 530-531. | Recommended combinations of modular sizes see pages 530-531.



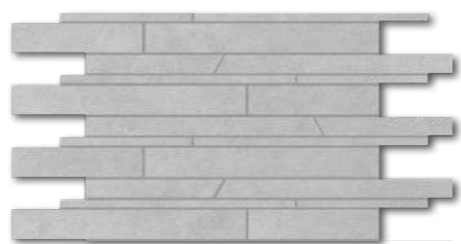
DAR63723*
DAR62723**
 PEI 4 ○ 82 | m²
 reliéf mat | structure matt



DARSE723*
DARSR723**
 PEI 4 ○ 82 | m²
 reliéf mat | structure matt



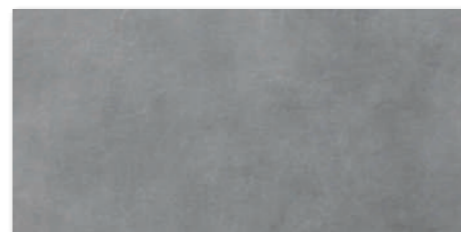
DAR4H723
 PEI 4 ○ 76 | m²
 reliéf mat | structure matt



DDVP4723 (SET)
 PEI 4 ○ 84 | set
 reliéf mat | structure matt
 světle šedá | light grey



DAR63724*
DAR62724**
 PEI 4 ○ 82 | m²
 reliéf mat | structure matt



DARSE724*
DARSR724**
 PEI 4 ○ 82 | m²
 reliéf mat | structure matt



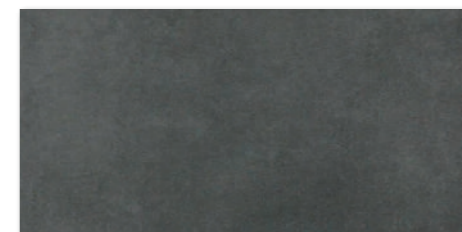
DAR4H724
 PEI 4 ○ 76 | m²
 reliéf mat | structure matt



DDVP4724 (SET)
 PEI 4 ○ 84 | set
 reliéf mat | structure matt
 tmavě šedá | dark grey



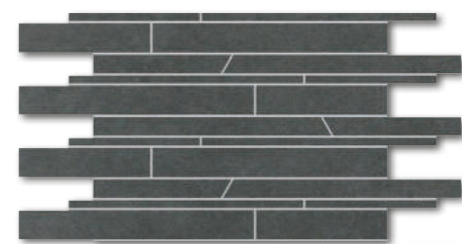
DAR63725*
DAR62725**
 PEI 4 ○ 82 | m²
 reliéf mat | structure matt



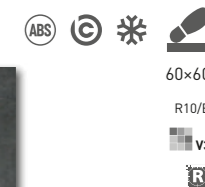
DARSE725*
DARSR725**
 PEI 4 ○ 82 | m²
 reliéf mat | structure matt



DAR4H725
 PEI 4 ○ 76 | m²
 reliéf mat | structure matt



DDVP4725 (SET)
 PEI 4 ○ 84 | set
 reliéf mat | structure matt
 černá | black



60x60
 R10/B
 v3
 R

30x60
 R10/B
 v3
 R

45x45
 R10/B
 v3
 R

30x45
 R10/B
 v3
 R

výrobek | product



výrobek product	cm	mm	EN	mm	ks/m ²	m ²	m ³	kg	kg/m ²	kg	
dlaždice floor tile*	60x60	598x598x10	EN 14411 - G Bla	3	2,8	1,08	32	34,56	23,7	21,9	782
dlaždice floor tile**	60x60	598x598x9	EN 14411 - G Bla	4	2,8	1,44	32	46,08	29,1	20,2	955
dlaždice floor tile*	30x60	298x598x10	EN 14411 - G Bla	6	5,6	1,08	40	43,20	23,7	21,9	971
dlaždice floor tile**	30x60	298x598x9	EN 14411 - G Bla	7	5,6	1,26	40	50,40	24,2	19,2	993
dlaždice floor tile	45x45	445x445x8	EN 14411 - G Bla	6	5	1,21	34	41,14	21,1	17,4	741
dlaždice floor tile	30x45	298x445x8	EN 14411 - G Bla	5	7,4	0,68	36	-	10,5	17,4	-

* Do vyprodání zásob | Available while stocks last

** Nový produkt o tloušťce 9 mm k dispozici během roku 2025 | New product in 9 mm thickness available during 2025.

Doporučené skladby formátů viz str. 530-531. | Recommended combinations of modular sizes see pages 530-531.



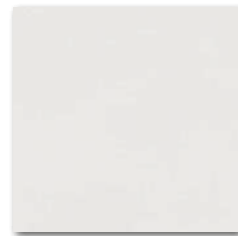
30×30
20×20
10×10
5×5 | 30×30

R10/B
v3

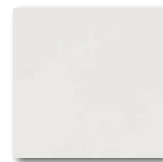


30×30
20×20
10×10
5×5 | 30×30

R10/B
v3



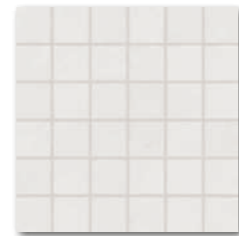
DAR34722
PEI 5 ○ 72 | m²
relief mat | structure matt
bílá | white



DAR26722*
DAR25722**
PEI 5 ○ 90 | m²
relief mat | structure matt |



DAR12722* (SET)
DAR11722**
PEI 5 ○ 94 | m²
relief mat | structure matt |



DDM06722* (SET)
DDM05722**
PEI 5 ○ 72 | set
relief mat | structure matt |



DAR34723
PEI 4 ○ 72 | m²
relief mat | structure matt
světle šedá | light grey



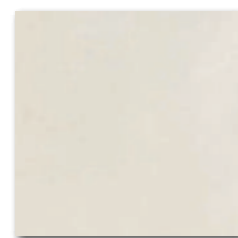
DAR26723*
DAR25723**
PEI 4 ○ 90 | m²
relief mat | structure matt |



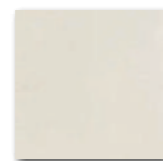
DAR12723* (SET)
DAR11723**
PEI 4 ○ 94 | m²
relief mat | structure matt |



DDM06723* (SET)
DDM05723**
PEI 4 ○ 72 | set
relief mat | structure matt |



DAR34720
PEI 5 ○ 72 | m²
relief mat | structure matt
slonová kost | ivory



DAR26720*
DAR25720**
PEI 5 ○ 90 | m²
relief mat | structure matt |



DAR12720* (SET)
DAR11720**
PEI 5 ○ 94 | m²
relief mat | structure matt |



DDM06720* (SET)
DDM05720**
PEI 5 ○ 72 | set
relief mat | structure matt |



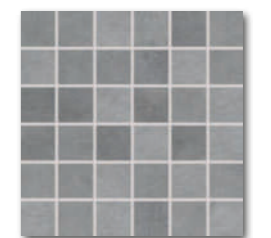
DAR34724
PEI 4 ○ 72 | m²
relief mat | structure matt
tmavě šedá | dark grey



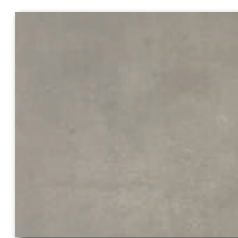
DAR26724*
DAR25724**
PEI 4 ○ 90 | m²
relief mat | structure matt |



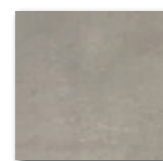
DAR12724* (SET)
DAR11724**
PEI 4 ○ 94 | m²
relief mat | structure matt |



DDM06724* (SET)
DDM05724**
PEI 4 ○ 72 | set
relief mat | structure matt |



DAR34721
PEI 4 ○ 72 | m²
relief mat | structure matt
hnědošedá | brown-grey



DAR26721*
DAR25721**
PEI 4 ○ 90 | m²
relief mat | structure matt |



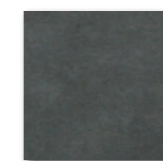
DAR12721* (SET)
DAR11721**
PEI 4 ○ 94 | m²
relief mat | structure matt |



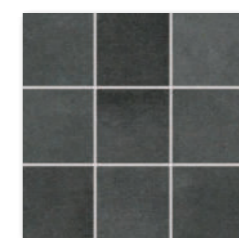
DDM06721* (SET)
DDM05721**
PEI 4 ○ 72 | set
relief mat | structure matt |



DAR34725
PEI 4 ○ 72 | m²
relief mat | structure matt
černá | black



DAR26725*
DAR25725**
PEI 4 ○ 90 | m²
relief mat | structure matt |



DAR12725* (SET)
DAR11725**
PEI 4 ○ 94 | m²
relief mat | structure matt |

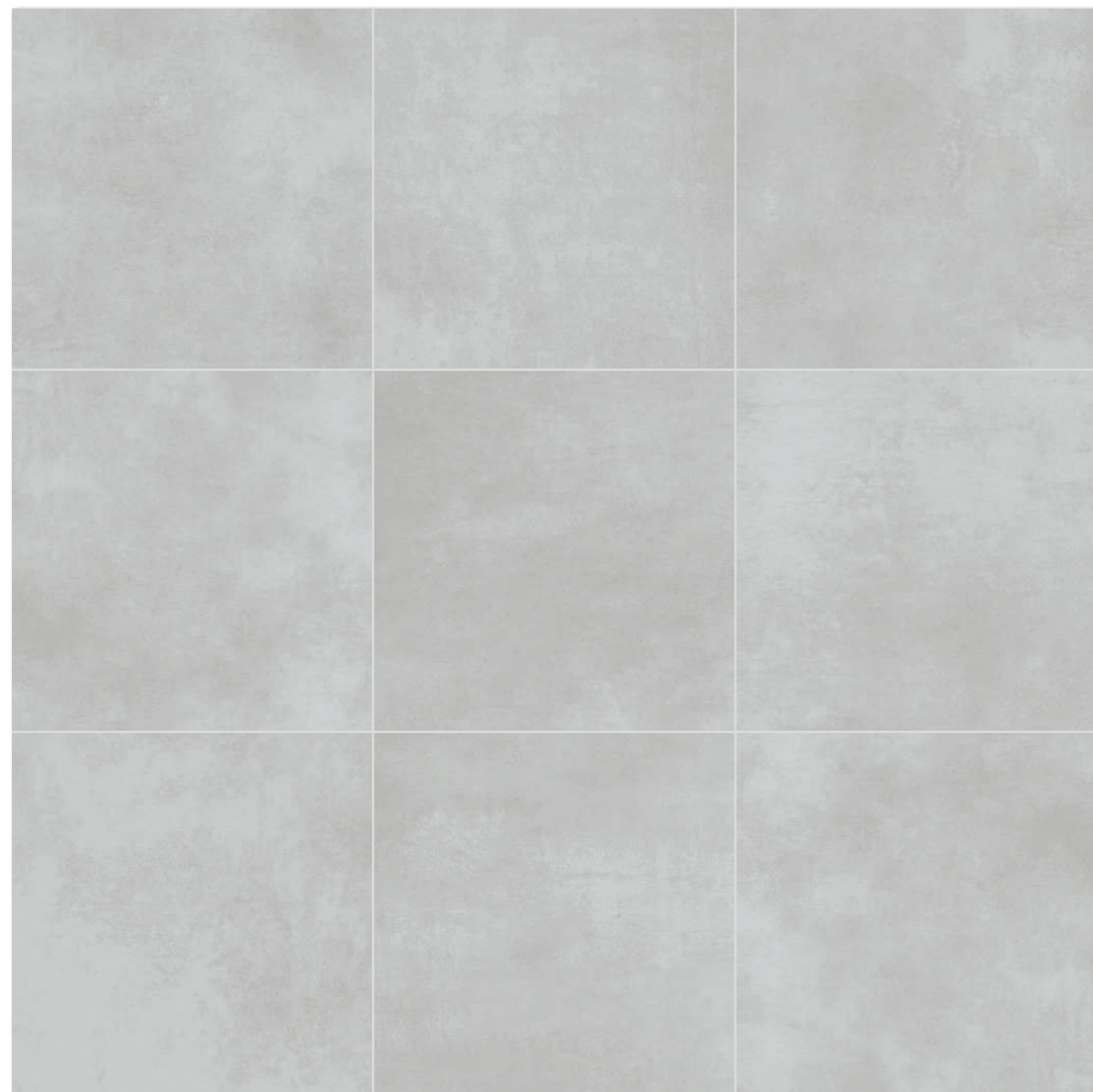


DDM06725* (SET)
DDM05725**
PEI 4 ○ 72 | set
relief mat | structure matt |

výrobek product	cm	mm	EN	ks/m ²	ks/m ²	ks/m ²	ks/m ²	ks/m ²	kg/m ²	ks/m ²	
dlaždice floor tile	30×30	298×298×8	EN 14411 - G Bla	13	11	1,18	48	56,64	20,5	17,4	1 011
dlaždice floor tile*	20×20	197×197×10	EN 14411 - G Bla	23	25	0,92	57	52,44	20,1	21,9	1 174
dlaždice floor tile**	20×20	197×197×9	EN 14411 - G Bla	25	25	1,00	57	57,00	19,2	19,2	1 119
dlaždice floor tile*	10×10	98×98×10	EN 14411 - G Bla	10	11	0,91	56	50,96	19,9	21,9	1 142
dlaždice floor tile**	10×10	98×98×9	EN 14411 - G Bla	11	11	1,00	56	56,00	19,2	19,2	1 125
mozaika set 30×30 cm mosaic sheet 30×30 cm*	5×5	48×48×10	EN 14411 - G Bla	3	11	0,27	-	-	5,9	-	-
mozaika 30×30 cm mosaic sheet 30×30 cm**	5×5	48×48×9	EN 14411 - G Bla	3	11	0,27	-	-	5,2	-	-

* Do vyprodání zásob | Available white stocks last

** Nový produkt o tloušťce 9 mm k dispozici během roku 2025 | New product in 9 mm thickness available during 2025.

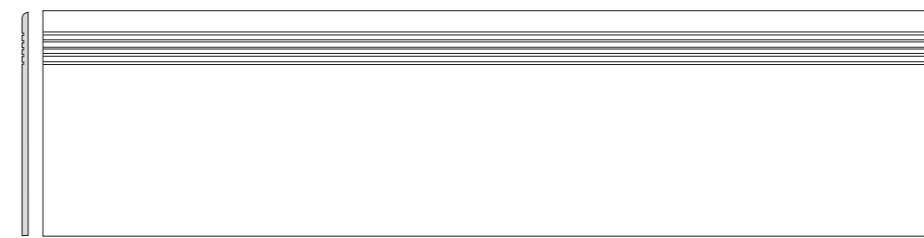


Všechny výrobky celé série vykazují velké odchylky odstínové difference V3. | All products of the entire batch show big deviations in shade difference V3.

Před pokládkou doporučujeme jednotlivé obkladové prvky vybírat z několika kartonů a výslednou plochu komponovat podle inspirativní fotodokumentace z katalogů RAKO případně z webových stránek www.rako.cz. Žádoucí je kombinace všech jednotlivých designů obkladových prvků včetně jejich natáčení o 90° nebo 180° tak, aby bylo dosaženo vyváženého vzhledu obkládané plochy.

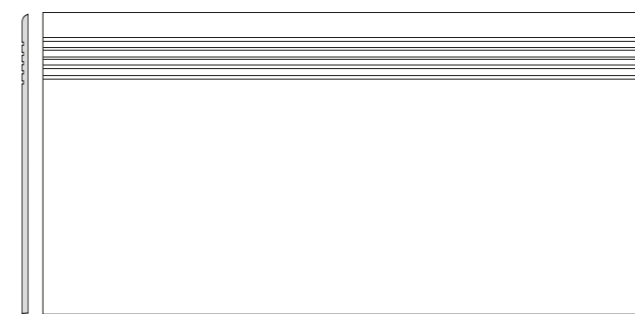
Before laying the tiles, we suggest you selectb from several cartons and arrange them as illustrated in the inspiration photo documentation in RAKO catalogues or website www.rako.eu, and mix the tiles to achieve the required result including turning them by 90° or 180°.

výrobek product	mm	mm	EN	ks/m ²	ks/m ²	m ² /ks	ks/m ²	kg/m ²	kg/m ²	ks/m ²
schodovka step tile*	30x120	298x1198x10	EN 14411 - G Bla	3/5	2,8	1,08/1,8	-	-	24,6/40,9	22,7
schodovka step tile**	30x120	298x1198x9	EN 14411 - G Bla	3	2,8	1,08	-	-	22,5	-
schodovka step tile	40x80	398x798x10	EN 14411 - G Bla	2	3,1	0,64	-	-	14,1	-
schodovka step tile*	30x60	298x598x10	EN 14411 - G Bla	6	5,6	1,08	-	-	23,7	-
schodovka step tile**	30x60	298x598x9	EN 14411 - G Bla	5	5,6	0,90	-	-	17,3	-
sokl skirting plinth	80x9,5	798x95x10	EN 14411 - G Bla	10	13,2	0,76	-	-	16,7	-
sokl skirting plinth*	60x9,5	598x95x10	EN 14411 - G Bla	13	17,5	0,74	-	-	16,2	-
sokl skirting plinth**	60x7,2	598x72x9	EN 14411 - G Bla	14	23,1	0,60	-	-	11,5	-
sokl skirting plinth	45x8,5	448x85x8	EN 14411 - G Bla	25	26,1	0,96	-	-	16,7	-
schodová tvarovka special step tile	40x80	398x798x10	STO č. 030 - 059824	2	-	-	-	-	16,5	-
schodová tvarovka special step tile*	30x120	298x1198x10	STO č. 030 - 059824	2	-	-	-	-	-	-
schodová tvarovka special step tile**	30x120	298x1198x9	STO č. 030 - 059824	2	-	-	-	-	-	-



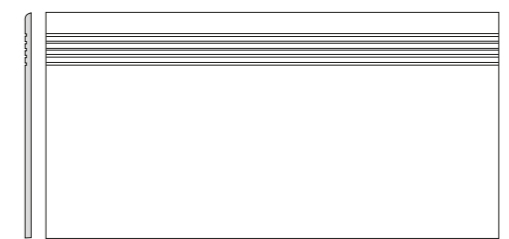
30x120
R10/B
V3
R

DCPVF720* | **DCPVD720**** slonová kost | ivory
DCPVF721* | **DCPVD721**** hnědošedá | brown-grey
DCPVF722* | **DCPVD722**** bílá | white
DCPVF723* | **DCPVD723**** světle šedá | light grey
DCPVF724* | **DCPVD724**** tmavě šedá | dark grey
DCPVF725* | **DCPVD725**** černá | black
PEI 4-5 ○ 86 | ks
relief mat | structure matt



40x80
30x60
R10/B
V3
R

DCP84720 slonová kost | ivory
DCP84721 hnědošedá | brown-grey
DCP84722 bílá | white
DCP84723 světle šedá | light grey
DCP84724 tmavě šedá | dark grey
DCP84725 černá | black
PEI 4-5 ○ 78 | ks
relief mat | structure matt



DCPSE720* | **DCPSR720**** slonová kost | ivory
DCPSE721* | **DCPSR721**** hnědošedá | brown-grey
DCPSE722* | **DCPSR722**** bílá | white
DCPSE723* | **DCPSR723**** světle šedá | light grey
DCPSE724* | **DCPSR724**** tmavě šedá | dark grey
DCPSE725* | **DCPSR725**** černá | black
PEI 4-5 ○ 72 | ks
relief mat | structure matt



80x9,5
60x7,2**
R

DSA89720 slonová kost | ivory
DSA89721 hnědošedá | brown-grey
DSA89722 bílá | white
DSA89723 světle šedá | light grey
DSA89724 tmavě šedá | dark grey
DSA89725 černá | black
○ 72 | ks
relief mat | structure matt

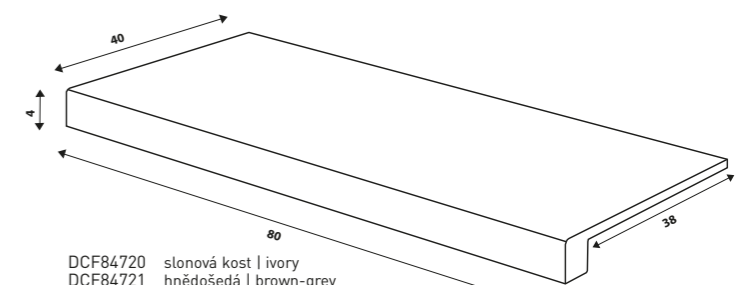


DSAS4720* | **DSAS3720**** slonová kost | ivory
DSAS4721* | **DSAS3721**** hnědošedá | brown-grey
DSAS4722* | **DSAS3722**** bílá | white
DSAS4723* | **DSAS3723**** světle šedá | light grey
DSAS4724* | **DSAS3724**** tmavě šedá | dark grey
DSAS4725* | **DSAS3725**** černá | black
○ 56 | ks
relief mat | structure matt



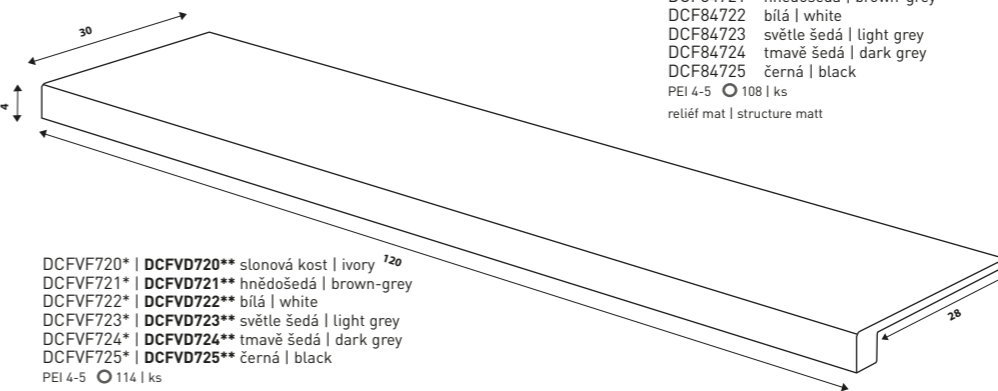
45x8,5
R
40x80
R10/B
V3
R

DSAPS720 slonová kost | ivory
DSAPS721 hnědošedá | brown-grey
DSAPS722 bílá | white
DSAPS723 světle šedá | light grey
DSAPS724 tmavě šedá | dark grey
DSAPS725 černá | black
○ 54 | ks
relief mat | structure matt



40x80
R10/B
V3
R

DCF84720 slonová kost | ivory
DCF84721 hnědošedá | brown-grey
DCF84722 bílá | white
DCF84723 světle šedá | light grey
DCF84724 tmavě šedá | dark grey
DCF84725 černá | black
PEI 4-5 ○ 108 | ks
relief mat | structure matt



30x120
R10/B
V3
R

DCFVF720* | **DCFVD720**** slonová kost | ivory ⁷²⁰
DCFVF721* | **DCFVD721**** hnědošedá | brown-grey
DCFVF722* | **DCFVD722**** bílá | white
DCFVF723* | **DCFVD723**** světle šedá | light grey
DCFVF724* | **DCFVD724**** tmavě šedá | dark grey
DCFVF725* | **DCFVD725**** černá | black
PEI 4-5 ○ 114 | ks
relief mat | structure matt

* Do vyprodání zásob | Available white stocks last

** Nový produkt o tloušťce 9 mm k dispozici během roku 2025 | New product in 9 mm thickness available during 2025.